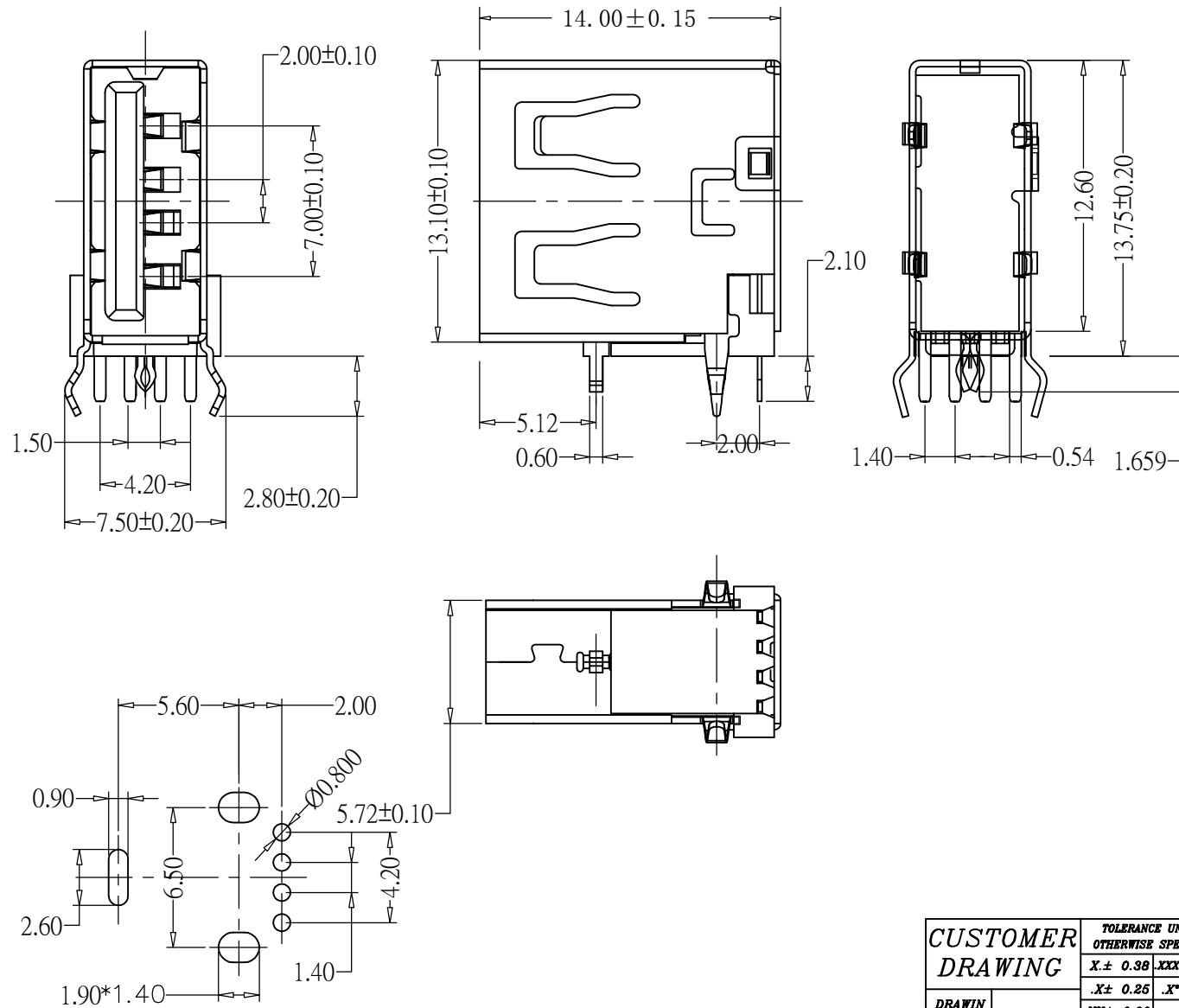


REV.	ECN NUMBER	DESCRIPTION	DRAWING	DATE



**ELECTRICAL CHARACTERISTICS:**  
CONTACT CURRENT RATING : 1.5 AMPERES.  
DIELECTRIC WITHSTANDING VOLTAGE : AC 500V R. M. S.  
INSULATION RESISTANCE : 1000 MEGOHMS MINIMUM AT DC 500V.  
CONTACT RESISTANCE : 30 MILLIOHM MAXIMUM.  
OPERATING TEMPERATURE : -55° TO+105° .

**MECHANICAL CHARACTERISTICS:**  
CONTACT INSERTION FORCE :3.57KG MAXIMUM.  
CONTACT SEPARATION FORCE :1.0KG MINIMUM.

**MATERIALS:**  
HOUSING:PBT+30% G/F, UL94V-0, BLACK.  
CONTACT:BRASS 2680R-H, T=0.25±0.015mm.  
SHELL:BRASS 2680R-H, T=0.30±0.01mm;

CONTACTS:GOLD FLASHED 1U", 3U", 5U", 10U", 15U", 30U".  
END OF NI-50U"MIN  
SHELL: NICKEL PLATED OVER 30~100U" MIN.

CUSTOMER DRAWING		TOLERANCE UNLESS OTHERWISE SPECIFIED		Coorle 库乐科技			
		X± 0.38	XXX± 0.15	PART NO.		DWG NO.	
DRAWN		.X± 0.25	.X*± 4°				
CHECKED		.XX± 0.20		TITLE		USB A 母 侧插 L=14MM	
APPROVE				PROJ.		SIZE	REV.
DATE				PROJ.		SIZE	REV.